



IMAGES FROM [ALL ABOARD: A CELEBRATION OF WALT'S TRAINS](#)
EXHIBITION AT THE WALT DISNEY FAMILY MUSEUM

Press Contact: Andi Wang | Communications Manager | 415.345.6816 | awang@wdfmuseum.org

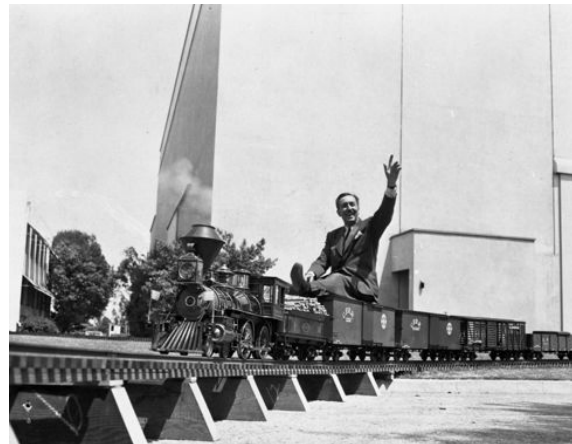
Walt Disney, 1951.

Collection of LOOK Magazine, photo by Earl Theisen; courtesy of the Library of Congress; © Disney.



Walt Disney riding solo—on his Carolwood Pacific railroad train, towed by the *Lilly Belle* steam engine—around The Walt Disney Studios, ca. 1951.

Courtesy of The Walt Disney Company, ©Disney.



Walt with his daughters Diane and Sharon in front of his Carolwood Pacific Railroad Barn at his home in Holmby Hills, California; ca. 1950.

Courtesy of The Walt Disney Company, © Disney.



Casey Jr. story sketch from *Dumbo*, ca. 1941

*Collection Walt Disney Family Foundation,
© Disney.*



Disneyland Toy Train.

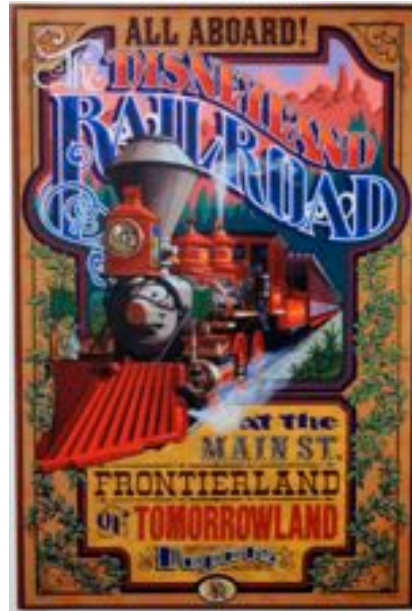
Collection Michael Aronson, © Disney.



Disneyland Railroad Attraction Poster, 1977.

Jim Michaelson, Ernie Prinzhorn, and Rudy Lord

Courtesy of Walt Disney Imagineering, © Disney.



Walt Disney riding the E. P. Ripley on the Disneyland Railroad, 1955.

Collection Michael and Sharon Broggie, © Disney.



Carolwood Pacific Railroad's Lilly Belle Assembly Drawing

Collection Walt Disney Family Foundation.

The Lilly Belle is an 1/8 scale model of a steam engine, which pulled a train that ran on the Carolwood Pacific Railroad—a ½ mile track, located around Walt's home in Holmby Hills, California.



The Lilly Belle, as seen in the main galleries at The Walt Disney Family Museum.

© The Walt Disney Family Museum.



Walt on Kalamazoo handcar, ca. 1956.

Courtesy of Walt Disney Imagineering, © Disney.



Mickey in cab; still from *Mickey's Choo-Choo*, 1929.

Courtesy of The Walt Disney Company, © Disney.

