

PRIVATE & CORPORATE EVENT RENTALS



Located in the Presidio of San Francisco, The Walt Disney Family Museum is one of the Bay Area's most inspirational event and meeting venues, with the Golden Gate Bridge to the west, Crissy Field to the north, and the City to the east. At one time the U.S. Army's premier West Coast base, Congress decommissioned the Presidio in 1989 and transferred the buildings to the National Park Service.

Housed in a restored 1890s army barracks, the museum tells the story of Walt Disney—the man who raised animation to an artform, tirelessly pursued innovation, and created a distinctly American legacy.

The Walt Disney Family Museum is a perfect fit for any event you can imagine. The breathtaking backdrop of the Golden Gate Bridge, the natural beauty of the surroundings, and the bustling cityscape in the distance perfectly place this unique venue within the historic and vibrant charm of San Francisco.

Meetings and events can be customized to include any of the spaces in The Walt Disney Family Museum to make your event a truly memorable experience.





AWARDS LOBBY

| | |
|-------------------|--|
| Capacity: | Rates: |
| Reception: 300 | Base: \$6,200 (for up to four hours) |
| Seated Dinner: 70 | Premium Seasonal: \$6,800 (for up to four hours) |

The Awards Lobby is an excellent spot for a private gathering or intimate sit-down dinner, where guests are surrounded by an amazing collection of Walt Disney's awards and honors—highlighted by 26 of his Academy Awards.®

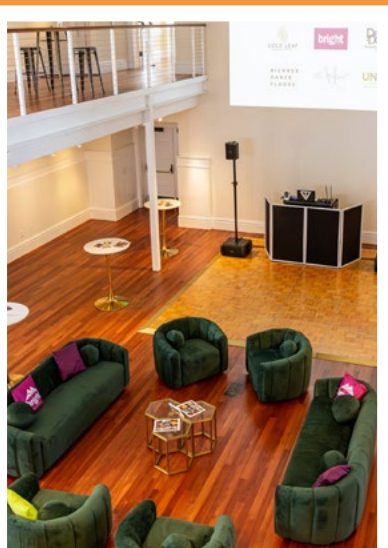
When weather permits, two wings on the museum's front porch can be opened up to guests. Adjacent to the Awards Lobby is the stylish cafe, and together, the combined spaces are ideal for an impressive reception.

THEATER & LOWER LOBBY

| | |
|----------------------|--|
| Capacity: 114 | Rates: |
| | Base: \$3,800 (for up to four hours) |
| | Premium Seasonal: \$4,200 (for up to four hours) |

Our *Fantasia*-inspired, state-of-the-art digital theater accommodates an audience of 114, and boasts colorful seats and dramatic lighting—creating a magical setting for lectures, meetings, and screenings.

The adjacent Lower Lobby hosts a rotating selection of small special exhibitions.



DIANE DISNEY MILLER EXHIBITION HALL

| | |
|--------------------|----------------------------|
| Capacity: | Rates: |
| Reception: 175 | \$8,000 (up to four hours) |
| Seated Dinner: 130 | |

The Diane Disney Miller Exhibition Hall is a unique venue for wedding receptions and corporate events. The lower level offers intimate sit-down dinners with plenty of space for a dance floor. The second floor, known as the Mezzanine level, provides an additional area for mingling during celebrations or corporate receptions.