



THE WALT  
DISNEY  
FAMILY  
MUSEUM

# Plan Your Event at The Walt Disney Family Museum



# The Walt Disney Family Museum



Located in the Presidio of San Francisco, The Walt Disney Family Museum is one of the Bay Area's most inspirational event and meeting venues, with the Golden Gate Bridge to the west, Crissy Field to the north, and the City to the east. Once the U.S. Army's premier West Coast base, Congress decommissioned it in 1989 and transferred the buildings to the National Park Service. Housed in a restored 1890s army barracks, the Museum tells the story of Walt Disney—the man who raised animation to an art, tirelessly pursued innovation, and created a distinctly American legacy—and is the center to be for imagination and creativity.



# The Venue



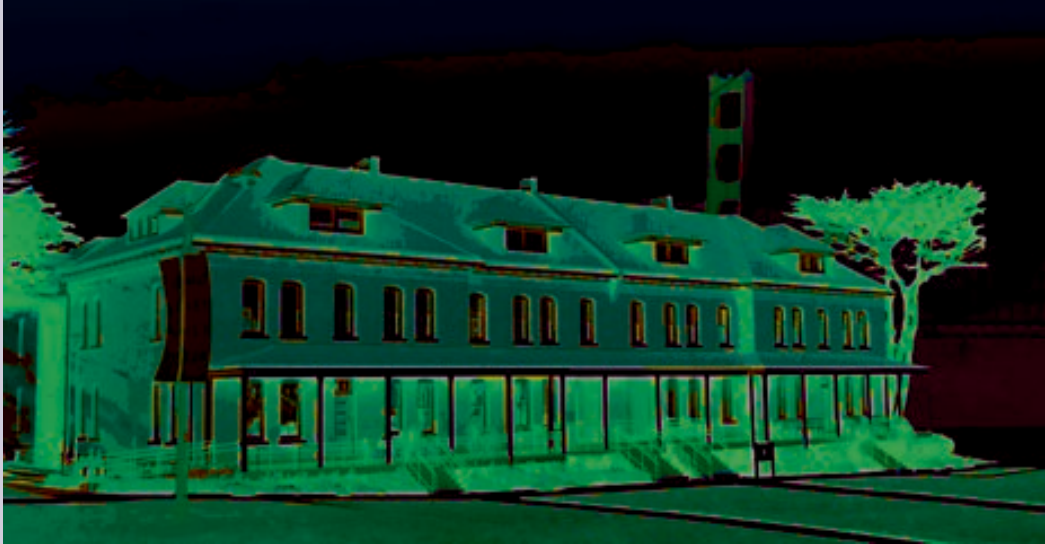
The Walt Disney Family Museum  
104 Montgomery Street  
The Presidio of San Francisco  
San Francisco, CA 94129

415.345.6827  
[www.waltdisney.org](http://www.waltdisney.org)





# The Buildings



Designed by the Rockwell Group and Page & Turnbull Architects, the Museum campus comprises two beautifully remodeled buildings. The main Museum building (104 Montgomery Street) is located on the Main Post of the Presidio adjacent to the Parade Grounds, and includes a lobby, a café, porch, and theater.

The Riley building, built in 1904 and located at 122 Riley Avenue, was previously the military post gymnasium. It houses the elegant special exhibition hall. Events can be held in this hall when it is not occupied by special exhibitions. The special exhibition hall is unavailable October 2012 through May 2013.

The Walt Disney Family Museum is inspirational and a perfect fit for any event you can imagine. The breathtaking backdrop of the Golden Gate Bridge, coupled with the natural beauty of the surroundings, embrace this unique venue in the charm of San Francisco. Meetings and events can be customized to include any or all of the spaces in The Walt Disney Family Museum to make your event a truly memorable and remarkable experience.



# The Lobby



The lobby is an excellent spot for a private gathering or intimate sit-down dinner, where guests are surrounded by an amazing collection of Walt Disney's awe-inspiring awards and honors, highlighted by 29 of his Academy Awards.®

When San Francisco weather permits, two wings on The Porch can be opened up to guests. Adjacent to the lobby is the stylish café, and together, the combined spaces are ideal for an impressive reception.



capacity  
reception: 200  
seated dinner: 50



# The Theater



Our *Fantasia*-inspired, state-of-the-art digital theater accommodates an audience of 114, boasts colorful seats and dramatic lighting, creating a magical setting for lectures, meetings, and screenings. The adjacent lobby can hold a pre- or post-reception for up to 114 guests.

capacity: 114





# The Special Exhibition Hall



The restoration of the special exhibition Hall has recaptured the drama of earlier Presidio architecture. The Riley building interior is beautifully rendered in shades of pale yellow and rich white with a warm natural wood floor.

The special exhibition Hall is unavailable between October 2012 through May 2013



# The Special Exhibition Hall



A charming balcony overlooks the impressive space. Meticulously transformed, the architectural details include period wainscoting, painted moldings, and five-paneled doors. Meetings, receptions, and seated dinners are perfect for this timeless space.

The Special Exhibition Hall is  
unavailable between October 2012  
through May 2013

capacity  
reception: 250  
seated dinner: 150





# The Café and Catering



Combine this inspiring venue with the world-class cuisine of Wolfgang Puck Catering and the results are spectacular events on a grand scale.



# Availability



The lobby, the café, porch, and theater are available for rental, after 6pm every day except Tuesdays, when they are available all day.

The special exhibition hall is available for rental seven days a week except October 2012 through May 2013.





# Reservations and Booking



Please contact the meeting and events department at 415.345.6827 to tour the space or book an event.





# Meetings and Events Contact



Jessica Blake  
Meetings & Events Department  
The Walt Disney Family Museum  
415.345.6827  
[jblake@wdfmuseum.org](mailto:jblake@wdfmuseum.org)

